

APERTURE



f2.8



f4.0



f5.6



f8.0



f11.0



f16.0

larger opening means
sensor exposed to more light
shallow depth of field

smaller opening means
sensor exposed to less light
deep depth of field

SHUTTER SPEED

15"

4"

1"

1/4

1/15

1/60

1/250

1/1000

slower time means
sensor exposed to more light
shows motion blur

faster time means
sensor exposed to less light
freezes motion

ISO



100

200

400

800

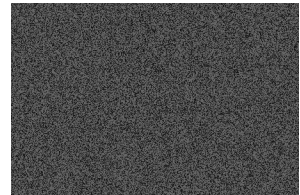
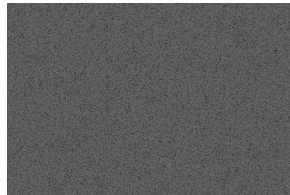
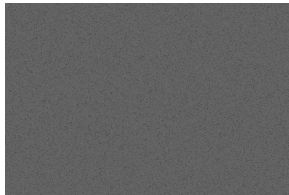
1000

1250

1600

3200

6400



lower light sensitivity means
sensor needs more light
less image noise

higher light sensitivity means
sensor needs less light
more image noise

WHITE BALANCE



Auto



Sunny



Cloudy



Shade



Fluorescent



Tungsten



Flash



Custom

Design Dept.
studios
~5200°k-5600°k

NOTE: use the LARGEST PICTURE SIZE and HIGHEST QUALITY photo settings the camera offers